



Beverage Cups

Sustainable solutions for a greener tomorrow



www.ecobio.earth



www.nexgenpac.com

Table of Content

Content List

- 1 Features & Benefits
- 2-3 Green Technology
- 4 Green Technology - EcoBio
- 5 Beverage Cup Matrix
- 6 Beverage Lid Matrix
- 7 Material Identification
- 8 Base Tool Identification
- 9 Printing Services Matrix
- 10 Custom Print Matrix
- 11 Custom Print Order Guide
- 12 Sampler & Taster Series
- 13 77mm Series
- 14 88mm Series
- 15 92mm Series
- 16 98mm Series
- 17-18 105 Series
- 19 Contact Us



Features & Benefits

Plastic Cups

- Smooth rolled rim
- Printable surface for branding
- Leak resistant lid fit
- Made from durable materials
- Made in the USA with globally sourced materials
- Premium materials to meet your sustainability goals
- Available in 6 materials



APET 50 RPET 80 RPET 100 ecoBIO PLA BPLA

Paper Cups

- 100% plastic free coating (water-based nano composite material)
- 100% recyclable
- 100% home and commercial compost-able
- 100% biodegradable
- Marine biodegradable
- 100% ecoBIO
- Microwave and oven-able
- Sustainable managed wood
- Food and beverage safe (FDA)
- No harmful chemicals - PFAS free
- Made in the USA from globally Sourced materials
- Premium materials to meet you sustainability goals



Sleeve
For Hot Cups



Flat Lids

- Flat straw slot
- Reclosable SIP design feature for no straw option
- Flavor buttons
- Available in 5 cup sizes - 77/88/92/98/105 Series
- Available in 6 materials



Dome Sip
For Hot Cups



PP
5

Dome Reclosable
For Hot Cups



PP
5

APET 50 RPET 80 RPET 100 ecoBIO PLA BPLA

Dome Lids

- Dome lid with wide hole
- Straw slot
- Available in 3 cup sizes - 88/92/98 series
- Available in 6 materials



APET 50 RPET 80 RPET 100 ecoBIO PLA BPLA

Green Technology

The global green technology and sustainability market size was valued at US \$16.50 billion in 2023 and is projected to grow from US \$19.83 billion in 2024 to US \$83.59 billion by 2032, exhibiting an annual growth rate of 19.7% during the forecast (2024-2032). **North America accounted for a market value of US \$5.84 billion in 2023 a period to be \$6.99 billion by 2032.**

United States Biodegradable Plastics Market is expected to reach US \$2.18 Billion by 2028, with an annual growth rate of 13.68% during this period of 2022-2028.

The plastics industry is changing. Biodegradable packaging has become an integral part of the global packaging market.

The rising consumer awareness of biodegradable packaging has led to tremendous growth in the overall market. Biodegradable materials can undergo biodegradation, a chemical process during which environmental microorganisms convert materials into natural substances such as carbon dioxide, water, compost. The method of biodegradation depends on the surrounding environmental conditions.



The North America plastic recycling market size was valued at USD 2.9 billion in 2020 and is expected to expand at a compound annual growth rate (CAGR) of 13.1% from 2021 to 2028. Changing consumer behavior towards sustainability is driving the market in North America. Increasing concerns related to plastic pollution, harmful emissions from the use of petrochemicals, and fluctuating crude oil prices have been driving the demand for plastic recycling. Increasing use of recycled plastics in several industries such as textiles, automotive, packaging, and electrical and electronics, and building and construction is anticipated to boost the demand for plastic recycling in the U.S. and Canada.

Rising concerns over the use of plastics, increasing demand for alternatives to conventional plastics have been observed in the market. End-use industries in the market are shifting their focus toward the use of recycled plastics to achieve a reduced carbon footprint associated with the manufacturing process of recycled plastics as compared to virgin plastics.

Please note that the views, thoughts, opinions and information contained on this report belong solely to the author. This information was collected from websites, company records and online reports available to the public.

The disposable paper and plastic cup market in the United States is expected to grow in the coming years, driven by the increasing demand for disposable cups in the beverage industry.

Here are some insights into the disposable cup market:

Market size: In 2023, the global disposable cup market was valued at \$12.59 billion and it is expected to reach \$29.38 billion by 2036. The US has a 15% market share or valued at \$1.8 billion per year.

Growth rate: the market is expected to grow at a compound annual growth rate (CAGR) of 6.7% from 2024 to 2036.

Factors driving growth: The market is expected to grow due to the convenience of disposable cups, their ability to serve hot and cold beverages, and the increasing number of food service outlets.

Paper vs plastic: The paper segment held the largest revenue share of 61% in 2023.

End-user: The commercial segment contributed more than 81% of revenue share in 2023.

Waste: The US uses around 130 billion disposable cups per year, and most of these ends up in landfills.

Sustainable paper cups: Some companies are focusing on producing sustainable paper cups by increasing their production capacity of paper recycling.

The biodegradable disposable cup market in the United States is expected to grow from \$3,151.3 million in 2022 to \$5,901.0 million by 2033. This represents a compound annual growth rate (CAGR) of 6.0% over the next decade.



Please note that the views, thoughts, opinions and information contained on this report belong solely to the author. This information was collected from websites, company records and online reports available to the public.



A Green Technology Brand



Plastic™

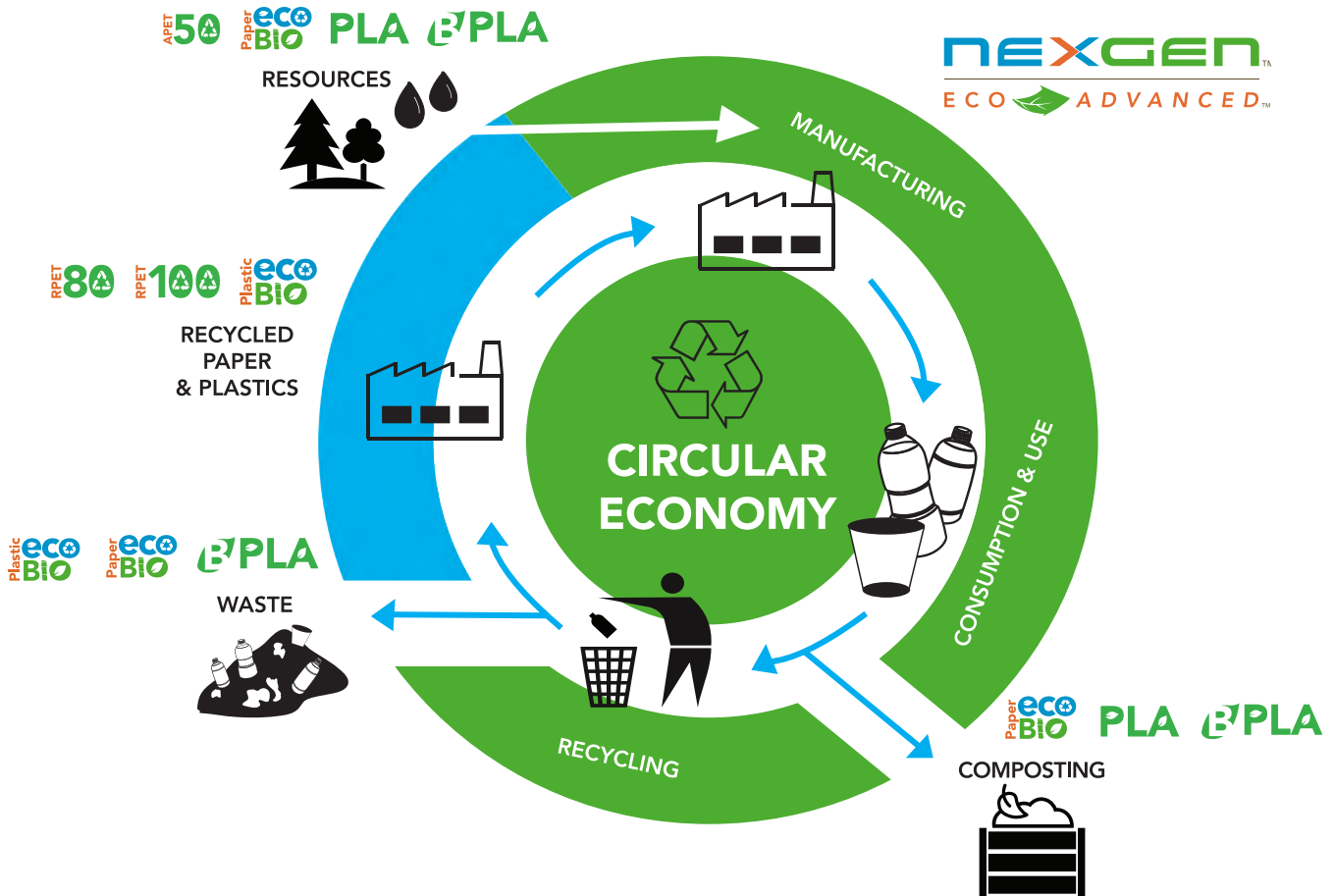
- 80% & 100% Post-Consumer Recycled Material
- Organic Biodegradable Additive
- Landfill Diversion
- UpCycle – Recycle and Reuse
- 29% Annual Recycling Rate
- * Energy Savings
- * Reduce Fossil Fuels
- * Reduce Carbon Footprint
- * Less Toxic
- FDA Approved
- EFSA Approved
- Global Recycling Standards
- ISO Certified Facilities

* Compared to Virgin Petroleum Based Materials



Paper™

- 100% Plastic Free Coating
- 100% Recyclable
- 100% Home Compostable
- 100% Commercial Compostable
- 100% Marine Degradable
- 100% Biodegradable
- 100% Repulpable
- 68% Annual Recycle Rate
- Freezable, Microwaveable & Ovenable
- No Harmful Chemicals – PFAS Free
- FDA Approved
- HALAL Approved
- PEFC Responsible Sourcing



We use the most eco-advanced materials for our paper and plastic manufactured items.

Beverage Cup Matrix

Sampler & Taster Series



Plastic



1oz



2oz



3.5oz



5oz



7oz



9oz

77mm Series



Paper



4oz



6oz



8oz

88mm Series



Paper



12oz



16oz



20oz

92mm Series



Plastic



4oz
Insert



9oz



12oz



14oz



16oz



18oz



20oz

98mm Series



Plastic



14oz



16oz



18oz



20oz



24oz

105mm Series



Plastic



30oz

Paper



32oz

Beverage Lid Matrix

77mm Series

ecoBio Paper



Straw Slot

88mm Series

ecoBio Paper



Straw Slot



Straw Slot Reclosable Sip



Dome With Hole



Dome No Hole

For Hot Cups



Earth Brown Dome Sip

For Hot Cups



Earth Brown Dome Reclosable

92mm Series

ecoBio Plastic



Straw Slot



Straw Slot Reclosable Sip



Dome With Hole



Dome No Hole

98mm Series

ecoBio Plastic



Straw Slot



Straw Slot Reclosable Sip



Dome With Hole



Dome No Hole



Dome Wide Hole

105mm Series

ecoBio Plastic



Straw Slot Reclosable Sip

Paper



Straw Slot Reclosable Sip

Material Identification

Material	RPET	RPET	RPET	EcoBio	EcoBio	PLA	PLA
Material Code	50	80	100	EB1	EBP	PLA	BPLA
Recycle Symbol	#1	#1	#1	#1	Paper	#7	#7
Price (1=Less Expensive)	1	2	3	4	5	6	7
Virgin Material	50%	0%	0%	0%	100%	100%	100%
Post Industrial Recycled PET	50%	20%	0%	0%	0%	0%	0%
Post Consumer Recycled PET	0%	80%	100%	100%	0%	0%	0%
Organic Biodegradable Additive	0%	0%	0%	2%	0%	0%	2%
Active Recycling	Yes	Yes	Yes	Yes	Yes	Yes	Yes
Biodegradable	No	No	No	Yes	Yes	No	Yes
Home Compostable	No	No	No	No	Yes	Yes	Yes
Commercial Compostable	No	No	No	No	Yes	Yes	Yes
Diversion from Landfill	Yes	Yes	Yes	Yes	Yes	Yes	Yes
UpCycle-Recycle & Reuse	Yes	Yes	Yes	Yes	Yes	No	No
Annual Recycling Rates	29%	29%	29%	29%	68%	No	No
Renewable Raw Material	No	No	No	No	Yes	0%	0%
* Energy Savings	Yes	Yes	Yes	Yes	Yes	Yes	Yes
* Reduced Fossil Fuel	Yes	Yes	Yes	Yes	Yes	Yes	Yes
* Reduced Carbon Footprint	Yes	Yes	Yes	Yes	Yes	Yes	Yes
* Less Toxic	Yes	Yes	Yes	Yes	Yes	Yes	Yes
Plastic Free	No	No	No	No	Yes	No	No
				BEST OPTIONS			

* Compared to Virgin Petroleum Based Materials

Please note that the views, thoughts, opinions and information contained on this report belong solely to the author. This information was collected from websites, company records and online reports available to the public.



SCAN ME



Base Tool Identification



PLA

- 100% virgin starch - organic sugarcane
- 100% renewable resource
- Commercially compostable
- Reduced fossil fuels & carbon footprint
- Less Energy - Less Toxic - Less Greenhouse Gases



EcoBio Paper

- 100% biodegradable
- 100% renewable resource - Sustainable
- Plastic Free - No harmful chemicals
- Home and Commercial compostable
- 68% recycle rate annually



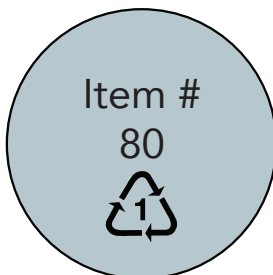
EcoBio Plastic

- 100% post consumer recycled content (PCR)
- Biodegradable - Organic additive
- 100% recyclable
- Diversion from Landfill - Upcycle
- 29% recycling rate annually



100% RPET

- 100% post consumer recycled content (PCR)
- 100% recyclable
- Diversion from Landfill - Upcycle
- 29% recycling rate annually



80% RPET

- 80% post consumer recycled content (PCR)
- 100% recyclable
- Diversion from Landfill - Upcycle
- 29% recycling rate annually



50% RPET

- 50% virgin PET
- 50% post industrial recycled content (PIR)
- 100% recyclable
- Diversion from Landfill - Upcycle
- 29% recycling rate annually

Printing Services Matrix



6-Week lead time from approved artwork and approved purchase order



\$250 RUSH order fee for print orders shipped under 4 weeks



\$250 Fee for print orders that are less than full pallets per cup size & artwork



\$100 Fee per color for plates and films - One time charge per print



Maximum 6-color print



\$5 per case for for applying custom carton labels



\$5 per case for applying custom sleeve labels



\$5 per case charge for custom sleeve counts or custom carton counts



\$5 per case for FedEx or UPS shipment processing - 3rd party billing



Please reduce case pack pricing by \$2.50 for plain and unprinted cups



All pricing is FOB Bridgeton, MO, 63044 unless otherwise specified in a supply agreement



All pricing is freight collect -
We can prepay freight and add to the invoice

Custom Print Matrix

ST Series	2oz	3oz	5oz	7oz	9oz
Minimum Print	12,500	12,500	12,000	12,000	12,000
Case Pack	2500	2500	1000	1000	1000
Cases Pallet	64	42	77	54	48
Cups pallet	160,000	105,000	77,000	54,000	48,000

77 Series	4oz	6oz	8oz
Minimum Print	36,000	36,000	36,000
Case Pack	1000	1000	1000
Cases Pallet	36	36	36
Cups pallet	36,000	36,000	36,000

88 Series	12oz	16oz	20oz
Minimum Print	24,000	24,000	24,000
Case Pack	1000	1000	1000
Cases Pallet	24	24	24
Cups pallet	24,000	24,000	24,000

92 Series	9oz	12oz	14oz	16oz	18oz	20oz
Minimum Print	12,000	12,000	12,000	12,000	12,000	12,000
Case Pack	1000	1000	1000	1000	1000	1000
Cases Pallet	42	30	30	30	24	24
Cups pallet	42,000	30,000	30,000	30,000	24,000	24,000

98 Series	14oz	16oz	18oz	20oz	24oz
Minimum Print	12,000	12,000	12,000	12,000	12,000
Case Pack	1000	1000	1000	1000	1000
Cases Pallet	30	30	24	24	24
Cups pallet	30,000	30,000	24,000	24,000	24,000

105 Series	30oz/32oz
Minimum Print	16,000
Case Pack	500
Cases Pallet	16
Cups pallet	8,000



Custom Print Order Guide



1. Cup Size:	
2. Cup Diameter:	
3. Cup Material:	
4. Cup Quantity:	
5. Number of Colors:	
6. Sleeve Labeling:	
7. Box Labeling:	
8. Pallet Labeling:	
9. Expected Delivery Date:	
10. RUSH Order:	
11. Prepaid Freight:	
12. Freight Account #:	
Printed Cup Price:	
Printed Cup PO#:	

Bill To:	
Address:	
City:	
State:	
Zip Code:	
Contact:	
E-Mail:	
Phone:	

Ship To:	
Address:	
City:	
State:	
Zip Code:	
Contact:	
E-Mail:	
Phone:	

Materials:	50	80	100	EB1	EBP	PLA	BPLA
Print Colors:	1	2	3	4	5	6	
Labels:	Standard	Sleeve	Box	Pallet			
Delivery:	RUSH	Standard					
Freight:	FOB	Prepaid	Prepaid & Add				

Date:	
Name:	
Signature:	

Sampler & Taster - ST Series

Plastic

Available Materials:



PLA

PLA



1oz
46-1

2oz
51-2

3.5oz
63-3

5oz
69-5

7oz
79-7

9oz
79-9

Item #	Item	Parts	Sleeve	Parts	Case	Case	Case	Case	Case	Case	Case	Case
Number	Description	Sleeve	Case	Case	Length	Width	Height	Weight	Cube	Layer	High	Pallet
ST Series												
46-1	1oz Clear Sampler & Taster Cup	100	25	2,500	19.25	9.43	9.75	11	1.02	20	5	100
51-2	2oz Clear Sampler & Taster Cup	100	25	2,500	12.87	8.43	20.6	11	1.29	16	4	64
63-3	3.5oz Clear Sampler & Taster Cup	100	25	2,500	12.83	22.3	13.1	22	2.16	6	7	42
69-5	5oz Clear Sampler & Taster Cup	50	20	1,000	14	13	11.56	11	1.21	11	7	77
79-7	7oz Clear Sampler & Taster Cup	50	20	1,000	15.9	16	13.1	14	1.92	9	6	54
79-9	9oz Clear Sampler & Taster Cup	50	20	1,000	16.1	15.9	13.1	15	1.88	8	6	48

77mm Series

Paper

Available Materials:  



4oz
77-04



6oz
77-06



8oz
77-08



Straw Slot
77-SS

Item #	Item	Parts	Sleeve	Parts	Case	Case	Case	Case	Case	Case	Case	Case
Number	Description	Sleeve	Case	Case	Length	Width	Height	Weight	Cube	Layer	High	Pallet
77 Series												
77-04	4oz Paper 77 Beverage Cup	50	20	1,000	12.8	10.3	16	16	2.4	9	4	36
77-06	6oz Paper 77 Beverage Cup	50	20	1,000	12.8	10.3	18	18	2.6	9	4	36
77-08	8oz Paper 77 Beverage Cup	50	20	1,000	12.8	10.3	20	20	2.8	9	4	36
77-SS	77 Flat - Straw Slot Clear Lid	100	10	1,000	16.8	7	18.5	6	1.3	14	4	56

88mm Series

Paper

Available Materials:   



12oz
88-12



16oz
88-16



20oz
88-21

For Hot Cups



Sleeve
88-SL



Straw Slot
88-SS



Straw Slot Reclosable Sip
88-SSRS



Dome Hole
88-DH



Dome No Hole
88-DNH



For Hot Cups

Earth Brown Dome Sip
88-EBDS



For Hot Cups

Earth Brown Dome Reclosable
88-EBDR

Item #	Item	Parts	Sleeve	Parts	Case	Case	Case	Case	Case	Case	Case	Case
Number	Description	Sleeve	Case	Case	Length	Width	Height	Weight	Cube	Layer	High	Pallet
88mm Series												
88-12	12oz Paper 88 Beverage Cup	60	20	1,200	18.3	14.8	22	30	3.5	6	4	24
88-16	16oz Paper 88 Beverage Cup	50	20	1,000	18.3	14.8	22.5	31	3.55	6	4	24
88-20	20oz Paper 88 Beverage Cup	50	20	1,000	18.3	14.8	23	32	3.6	6	4	24
88-SL	88 Paper Beverage Cup Sleeve	100	10	1,000	13.2	11	13.2	11	1.11	12	7	84
88-SS	88 Flat - Straw Slot Clear Lid	100	10	1,000	19.2	7.8	16.9	7	1.7	10	6	60
88-SSRS	88 Flat - Straw Slot Reclosable Sip Clear Lid	100	10	1,000	19.2	7.8	16.9	7	1.7	10	6	60
88-DH	88 Dome Hole Clear Lid	100	10	1,000	19.2	7.8	19.5	8	2	10	6	60
88-DNH	88 Dome No Hole Clear Lid	100	10	1,000	19.2	7.8	19.5	8	2	10	6	60
88-EBDS	88 Dome Earth Brown PP SIP Hot Cup Lid	100	10	1,000	14.8	11.1	19.1	12	2.03	10	6	60
88-EBDR	88 Dome Earth Brown PP Reclosable Hot Cup Lid	100	10	1,000	14.8	11.1	19.1	12	2.03	10	6	60

92mm Series

Plastic

Available Materials:



PLA

PLA



4oz
92-4

9oz
92-9

12oz
92-12

14oz
92-14

16oz
92-16

18oz
92-18

20oz
92-20



Straw Slot
92-SS

**Straw Slot
Reclosable Sip**
92-SSRS

Dome Hole
92-DH

Dome No Hole
92-DNH

Item #	Item	Parts	Sleeve	Parts	Case	Case	Case	Case	Case	Case	Case	Case
Number	Description	Sleeve	Case	Case	Length	Width	Height	Weight	Cube	Layer	High	Pallet
92mm Series												
92-4	4oz Clear Flush Fill 92 Insert Cup	125	8	1,000	23.1	13.7	8.3	8	1.5	6	11	66
92-9	9oz Clear Flush Fill 92 Beverage Cup	50	20	1,000	18.7	15.2	12.5	21	2.1	6	7	42
92-12	12oz Clear Flush Fill 92 Beverage Cup	50	20	1,000	18.7	15.2	16	29	2.5	6	5	30
92-14	14oz Clear Flush Fill 92 Beverage Cup	50	20	1,000	18.7	15.2	17	31	2.9	6	5	30
92-16	16oz Clear Flush Fill 92 Beverage Cup	50	20	1,000	18.7	15.2	19	34	3.5	6	5	30
92-18	18oz Clear Flush Fill 92 Beverage Cup	50	20	1,000	18.7	15.2	21	38	4	6	4	24
92-20	20oz Clear Flush Fill 92 Beverage Cup	50	20	1,000	18.7	15.2	24	45	3.8	6	4	24
92-SS	92 Flat - Straw Slot Clear Lid	100	10	1,000	19.2	7.8	16.9	8	1.7	10	6	60
92-SSRS	92 Flat - Straw Slot Reclosable Sip Clear Lid	100	10	1,000	19.2	7.8	16.9	8	1.7	10	6	60
92-DH	92 Dome Hole Clear Lid	100	10	1,000	19.2	7.8	19.5	8	2	10	6	60
92-DNH	92 Dome No Hole Clear Lid	100	10	1,000	19.2	7.8	19.5	8	2	10	6	60

98mm Series

Plastic

Available Materials:



PLA

PLA



14oz
98-14

16oz
98-16

18oz
98-18

20oz
98-20

24oz
98-24



Straw Slot
98-SS

**Straw Slot
Reclosable Sip**
98-SSRS

Dome Hole
98-DH

Dome No Hole
98-DNH

Dome Wide Hole
98-DWH

Item #	Item	Parts	Sleeve	Parts	Case	Case	Case	Case	Case	Case	Case	Case
Number	Description	Sleeve	Case	Case	Length	Width	Height	Weight	Cube	Layer	High	Pallet
98mm Series												
98-14	14oz Clear Flush Fill 98 Beverage Cup	50	20	1,000	18.7	15.2	17	31	2.9	6	5	30
98-16	16oz Clear Flush Fill 98 Beverage Cup	50	20	1,000	18.7	15.2	19	34	3.5	6	5	30
98-18	18oz Clear Flush Fill 98 Beverage Cup	50	20	1,000	18.7	15.2	21	38	3.6	6	4	24
98-20	20oz Clear Flush Fill 98 Beverage Cup	50	20	1,000	18.7	15.2	22	45	3.8	6	4	24
98-24	24oz Clear Flush Fill 98 Beverage Cup	50	20	1,000	18.7	15.2	24	30	4	6	4	24
98-SS	98 Flat - Straw Slot Clear Lid	100	10	1,000	19.2	7.8	16.9	8	1.7	10	6	60
98-SSRS	98 Flat - Straw Slot Reclosable Sip Clear Lid	100	10	1,000	19.2	7.8	16.9	8	1.7	10	6	60
98-DH	98 Dome Hole Clear Lid	100	10	1,000	19.2	7.8	19.5	8	2	10	6	60
98-DNH	98 Dome No Hole Clear Lid	100	10	1,000	19.2	7.8	19.5	8	2	10	6	60
98-DWH	98 Dome Wide Hole Clear Lid	100	10	1,000	19.2	7.8	19.5	8	2	10	6	60

105mm Series

Plastic

Available Materials: **APET 50** **RPET 80** **RPET 100** **Plastic** **eco Bio** **PLA** **BPLA** 



30oz
105-30-1



Straw Slot Reclosable Sip
105-SSRS

Item #	Item	Parts	Sleeve	Parts	Case	Case	Case	Case	Case	Case	Case	Case
Number	Description	Sleeve	Case	Case	Length	Width	Height	Weight	Cube	Layer	High	Pallet
105 Series												
105-30-1	30oz Clear Flush Fill 105 Beverage Cup	25	20	500	23.3	15.5	22.25	33	4.56	4	4	16
105-SSRS	105 Flat - Straw Slot Reclosable Sip Clear Lid	100	10	1,000	22	19	11	9	2.7	10	4	40



105mm Series

Paper

Available Materials:   



32oz
105-32-P



Straw Slot Reclosable Sip
105-SSRS

Item #	Item	Parts	Sleeve	Parts	Case	Case	Case	Case	Case	Case	Case	Case
Number	Description	Sleeve	Case	Case	Length	Width	Height	Weight	Cube	Layer	High	Pallet
105 Series												
105-32-P	32oz Paper Flush Fill 105 Beverage Cup	25	20	500	23.3	15.5	22.25	33	4.56	4	4	16
105-SSRS	105 Flat - Straw Slot Reclosable Sip Clear Lid	100	10	1,000	22	19	11	9	2.7	10	4	40

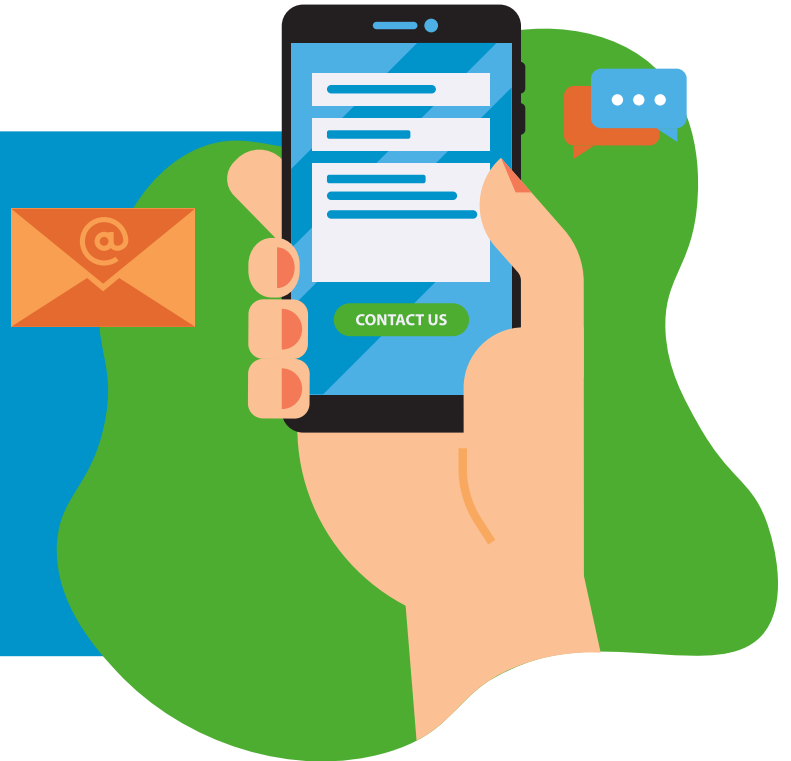


Contact Us



Carey Edwards

-  (314) 809 - 3039
-  carey@nexgenpac.com
-  www.nexgenpac.com



www.ecobio.earth



www.nexgenpac.com